

### Head Office

Unit 12, 8 Leighton Place  
Hornsby  
NSW, 2077  
Australia

### Firefly Office

P.O BOX 52  
Laidley  
QLD, 4341  
Australia

### Contact details

Phone: (07) 5411 4209  
Mobile: 0400 966 899  
Email: [trevor@tbafirefly.com.au](mailto:trevor@tbafirefly.com.au)

## MATERIAL DESCRIPTION

Firefly Intustrap is a high pressure intumescent wrap, which comes in a 25m long coil, easily cut to the required length using a long bladed Stanley knife. Used to wrap around thermally lagged copper pipes and small PVC /HDPE Pipes. In a fire the intumescent will expand to replace the gap left by the thermal insulation and plastic pipes as they melt away/break down, maintaining the full integrity/insulation of the fire seal.

## CERTIFICATION

Tested both horizontally and vertically

Tested in accordance with AS1530.4-2005  
Assessed in accordance with AS4072.1-2005

## UNIT OF MEASURE UNIT

SIZE 25m long x 60mm wide x 4mm thick

# FRL-/120/120

Thermally lagged pipes

# FRL-/240/240

Small PVC pipes

## APPLICATIONS

The common practice of cutting away thermal lagging to fire stop directly to a chilled water pipe, is currently having some extremely adverse effects on buildings. Namely cold bridging and condensation, leading to damp walls and ceilings below and around the chilled water pipe which may also eventually damage the integrity of the fire wall or floor.

Intustrap has been designed to allow thermally insulated copper pipes to pass through fire walls and floors, without the need to cut away the thermal insulation to maintain the compartment FRL.

Simply cut the required length of Intustrap, wrap it twice around the thermally lagged pipe where it passes through the fire compartment. Then fire stop around the perimeter of the Intustrap using Intubatt and Intumas-tic.

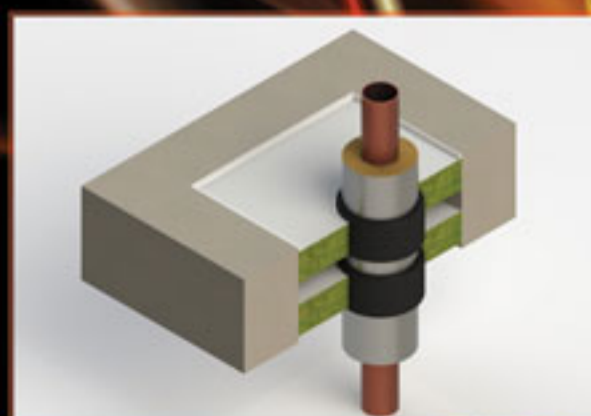
In addition, the Intustrap has been tested around small PVC and HDPE pipes and is installed in the same manner as above.

Ideal for use in plasterboard, masonry, Speedpanel walls and masonry floors. Fully fire tested around the following types of thermal insulation: PIR, NITRILE RUBBER, ROCKWOOL and GLASSWOOL.

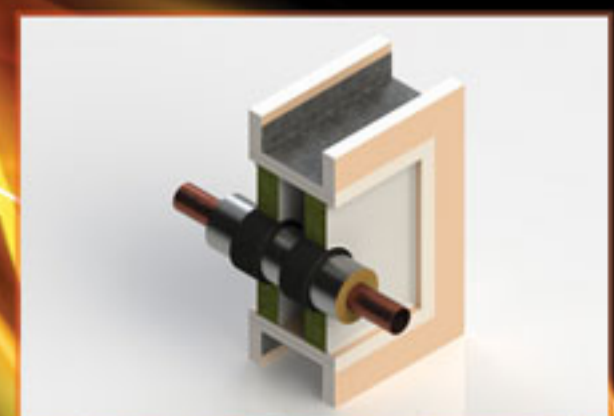
# INTUSTRAP



Intustrap Coil



Thermally Lagged Copper Pipe Protected by Intustrap in a Masonry Floor



Thermally Lagged Copper Pipe Protected by Intustrap in a FR Plasterboard Wall