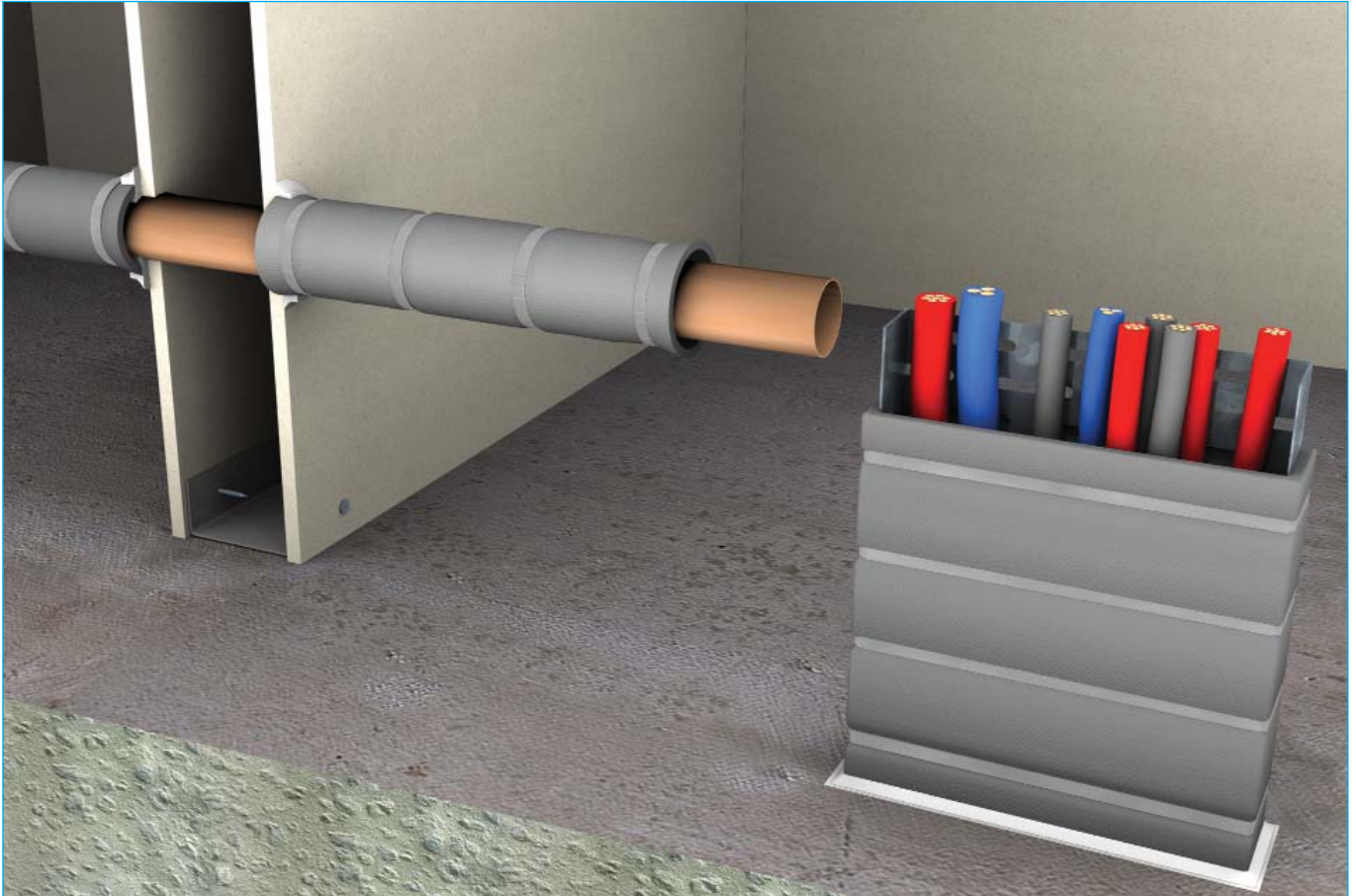


NEW

Promat

PROMASEAL® Wrap

Insulation Seals For Copper Pipes And Cable Trays



PROMASEAL® Wrap is designed to provide effective insulation for highly conductive materials such as copper pipes and cable trays.

The deemed to satisfy Building Code of Australia requires copper pipes and other service penetrations to be able to achieve insulation criteria when tested to the requirements of AS 1530: Part 4: 2005.

Copper and ferrous metal pipes, as well as some other metal penetrations, are generally considered highly conductive and may transfer heat to the unexposed side of a fire resisting building component. In these cases, the penetrating element must be adequately protected so as to not contribute to fire spread.

Promat has test data for copper pipes with diameters up to 150mm. For cable trays or bunches of cables, please consult Promat for information on insulation on the cables and the tray.

Installation Method

Where the service penetrates any fire resisting building element, ensure the gap around the service is completely sealed using PROMASEAL® AN Acrylic Sealant or PROMASEAL® Supa Mastic.

PROMASEAL® Wrap is positioned around pipes and cables and strapped into position with stainless steel bands in four locations installed 50mm from each end and spaced equally between them at approximately 230mm centres.

The PROMASEAL® Wrap is then sealed at the separating element on both sides with PROMASEAL® AN Acrylic sealant or PROMASEAL® Supa Mastic which extends 30mm along the PROMASEAL® Wrap and 30mm onto the separating element and in a triangular shape.

PROMASEAL® Wrap comes in the following sizes:

Large	– 800mm x 750mm to suit 100-150mm pipes
Medium	– 800mm x 550mm to suit 55-90mm pipes
Small	– 800mm x 400mm to suit pipes up to 50mm

For cable trays, use any of the above sizes but if more than one wrap needs to be joined, please ensure an overlap at the joint of at least 100mm.

In all cases the PROMASEAL® Wrap should extend \geq 800mm past the element.

Promat provides a comprehensive range of systems for compartmentation, fire rated air and cable ducts, structural steel protection, fire stopping and partitions. For assistance on passive fire protection solutions, please contact your local Promat distributor.

Promat Australia Pty. Ltd.

Tel: 1800 PROMAT (776 628) Email: mail@promat.com.au Website: www.promat.com.au
Fax: 08 8352 1014 (South Australia) 02 9630 0258 (New South Wales) 1800 334 598 (Victoria and Queensland)

an **etex** company