

Promat



PROMASEAL® Pillows Penetration Seals on Floors/Slabs/Walls

PROMASEAL® Pillows are made from quality cloth envelopes enclosing a high temperature fire resistant granulated material. They can provide permanent protection from the spread of fire, but they are particularly useful when only temporary protection is required.

PROMASEAL® Pillows are used whenever openings require reinstatement, whether penetrated or not by pipes or cable services. Risk of fire within a building is much greater during the construction phase than when completed. The pillows are a low cost and efficient method for fire sealing that requires minimum labour time for installation. They can be removed and re-used if services need relocation.

Feature Advantages

- Fire protection for up to 3 hours.
- Simple installation.
- Re-useable.
- Water repellent covers.
- Suitable for telecommunication exchanges.
- Maintenance free.
- Allows rearrangement of services.
- Non toxic.
- Attractive appearance.

Fire Performance

PROMASEAL® Pillows have been successfully tested and assessed by independent laboratories to meet the requirements of AS 1530: Part 4, AS 4072, BS 476: Part 20 and prEN 1366: Part 3. In a fire, the pillows will remain in place and form a fire barrier by charring and creating a solid mass of insulating material.

Packaging

Available in three sizes.

Large: 300mm x 250mm x 40mm, 30 pieces/pack.

Medium: 200mm x 250mm x 40mm, 50 pieces/pack.

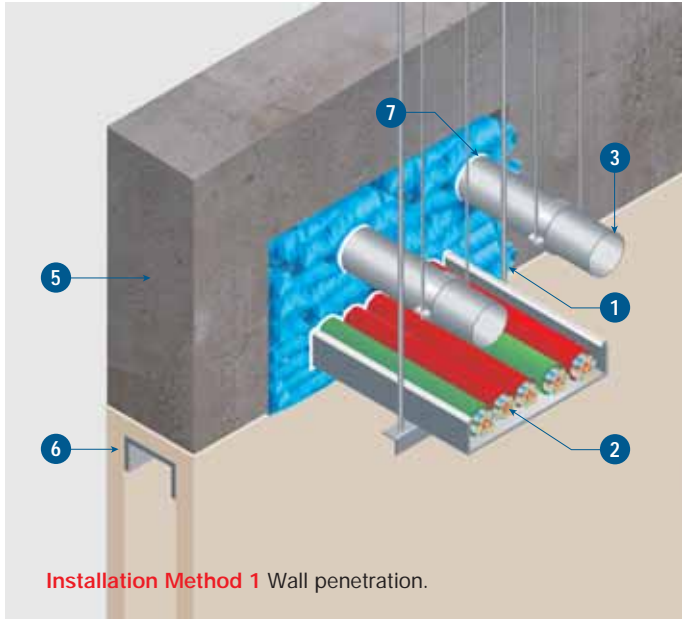
Small: 100mm x 250mm x 30mm, 60 pieces/pack.



Fire resistance up to 3 hours in floor, slab, and wall penetrations



New look of PROMASEAL® Pillows packaging



Installation Method 1 Wall penetration.



Installation Method 2 Floor penetration.

PROMASEAL® Pillows are normally installed by laying in courses to completely fill the penetrations. Where required to effect adequate overlap, the smaller sized pillow may be used at ends of layers of pillows.

Where for example non combustible pipes or cables penetrate installation of PROMASEAL® Pillows, care should be taken to ensure that a good seal is formed around such penetrations by the use of smaller pillows compressed into the gaps. Any gaps around penetrations to be sealed using PROMASEAL® Acrylic Sealant.

PROMASEAL® Pillows should be positioned either vertically in floors or horizontally with their length at right angles in walls. It is however important to ensure that pillows overlap at least 50mm and is advisable to ensure that any services are supported within 500mm of the wall. Bundles of cables should have PROMASEAL® Acrylic Sealant applied between the cables for the entire length that passes through the wall or floor.

Performance Table

Separating element	FRL (Fire Resistance Level) in minutes		
	Unpenetrated openings	Cable or tray	Copper, brass, steel and cast iron pipes
Slab 125mm Wall/Partition 96mm	-/120/120	/120/120*	-/120/120*
Slab 150mm	-/180/180	-/180/180*	-/180/-

*When insulation criterion is indicated on services, mesh guards may be required otherwise insulation criterion on services may be waived. Please contact Promat for details.

Test Approvals

All PROMASEAL® Pillows are tested or assessed to the relevant standard and building codes. Due to continued research and development, test approvals are constantly being upgraded and reviewed. Please update them with Promat.

TECHNICAL DATA

3 hours fire rating, integrity in accordance with the criteria of BS 476: Part 20 and AS 1530: Part 4.

- 1 PROMASEAL® Pillow
- 2 Electric cables and cable trays
- 3 Steel pipes
- 4 Telecommunication cables
- 5 Wall or floor elements
- 6 Lightweight partition
- 7 Gap seal with PROMASEAL® Acrylic Sealant

NOTE: For fire rating above 3 hours, please contact Promat for technical advice. To ensure a smoke tight construction, any visible gaps between pillows should be filled with PROMASEAL® Acrylic Sealant. All services passing through the pillows should be sealed using PROMASEAL® Acrylic Sealant to prevent the passage of smoke. For semi permanent installation enclose with steel wire mesh or seal with a thin coating of PROMASEAL® Acrylic Sealant. For further details, please contact your local Promat office.

Important Notes

Promat product data sheets and health and safety data sheets are regularly reviewed and are available on request. The successful use of this product is dependent on a number of factors. As the information contained in this literature can only be of a general nature, it is advisable to consult our technical department if there is any doubt about the correct use of this product in a particular application. Our technical representatives and advisors are available to provide further technical and commercial assistance.

PROMASEAL® Pillows are manufactured under a quality management system certified in accordance with ISO 9001: 2000 Certification. The production unit has passed the site audit of ISO 14001 and all manufacturing processes are in accordance with the environmental standards of ISO 14001.

ASIA PACIFIC HEADQUARTERS

Promat International (Asia Pacific) Ltd.
Tel: +60 (3) 2095 5111
Fax: +60 (3) 2095 6111
Email: info@promat-ap.com

AUSTRALIA

Promat Australia Pty. Ltd.
Tel: +61 1800 30 20 20
Fax: +61 (8) 8352 1014
Email: mail@promat.com.au

New South Wales Office

Promat Australia Pty. Ltd.
Tel: +61 1800 30 20 20
Fax: +61 (2) 9630 0258
Email: mail@promat.com.au

Victoria Office

Promat Australia Pty. Ltd.
Tel: +61 1800 30 20 20
Fax: +61 (3) 9645 3844
Email: mail@promat.com.au

Western Australia Office

Promat Australia Pty. Ltd.
Tel: +61 1800 30 20 20
Fax: +61 1800 33 45 98
Email: mail@promat.com.au

CHINA

Promat China Ltd.
Tel: +86 (20) 8136 1167
Fax: +86 (20) 8136 1372
Email: info@promat.com.cn

Beijing Office

Promat North China
(Division of Promat China Ltd.)
Tel: +86 (10) 8589 1254
Fax: +86 (10) 8589 2904
Email: info@promat.com.cn

HONG KONG

Promat International (Asia Pacific) Ltd.
Tel: +852 2836 3692
Fax: +852 2834 4313
Email: apromath@promat.com.hk

INDIA

Promat International (Asia Pacific) Ltd.
(India Representative Office)
Tel: +91 (11) 2433 1594
Fax: +91 (11) 2433 1595
Email: info-india@promat-asia.com

MALAYSIA

Promat (Malaysia) Sdn. Bhd.
Tel: +60 (3) 2095 8555
Fax: +60 (3) 2095 2111
Email: info@promat.com.my

SINGAPORE

Promat Building System Pte. Ltd.
Tel: +65 6776 7635
Fax: +65 6776 7624
Email: info@promat.com.sg

VIETNAM

Promat International (Asia Pacific) Ltd.
(Vietnam Representative Office)
Tel: +84 (8) 931 5964
Fax: +84 (8) 931 5964
Email: phuong@promat-asia.com

OFFICIAL WEBSITE

www.promat-ap.com

Your local Promat supplier

