

Promat



PROMASTOP® AirChoke® Externally Mounted Fire Damper

Description

PROMASTOP® AirChoke® fire dampers are devices incorporating an intumescent material designed to maintain the integrity and insulation of the fire rated element through which ducts pass.

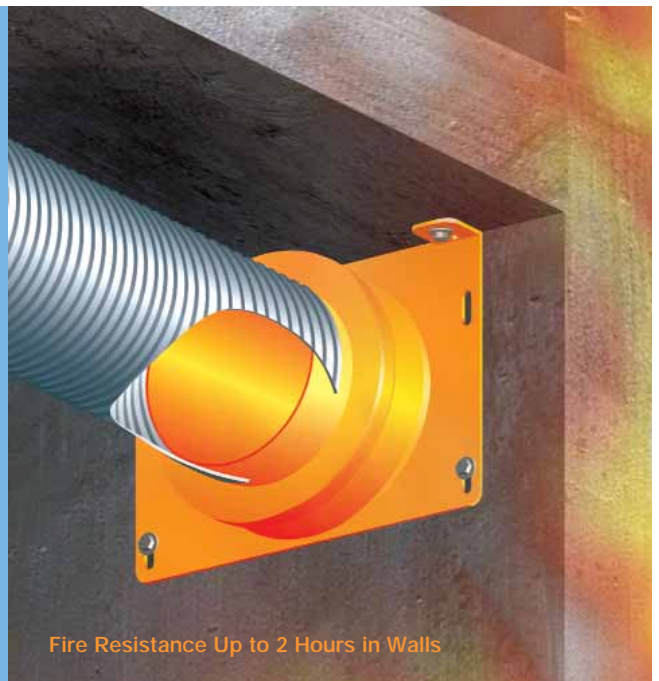
When attached to the fire risk side of a wall or shaft, in the event of fire the PROMASTOP® AirChoke® fire damper rapidly closes off the duct and stops the fire passing into the adjoining compartment.

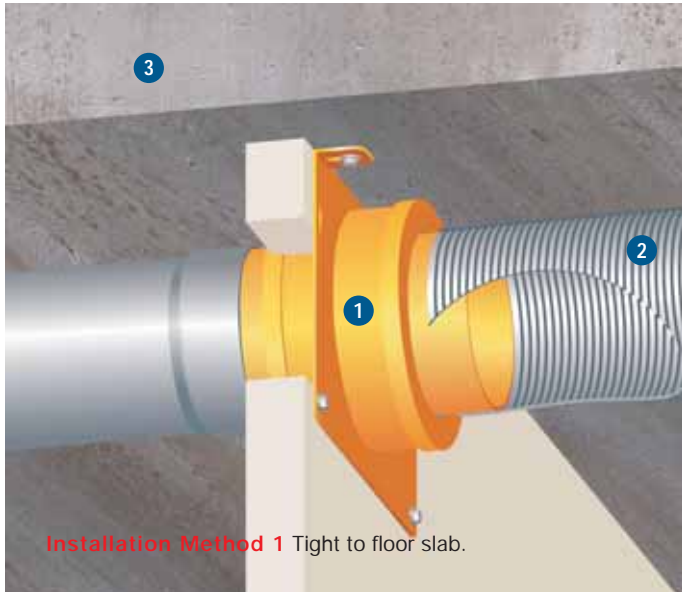
Feature Advantages

- Quick, simple fixing method.
- Slotted fixing tabs for slab if required.
- Powder coated orange to prevent corrosion
- Truncated uPVC spigots for 150mm duct.
- No internal grills to disrupt air flow or allow lint build-up.
- Large rectangular flange plate for easy installation.
- Low profile only 220mm high.
- Complete closure in less than 2 minutes.
- Minimal inspection, no activation or cleaning required.
- No internal inspection necessary.

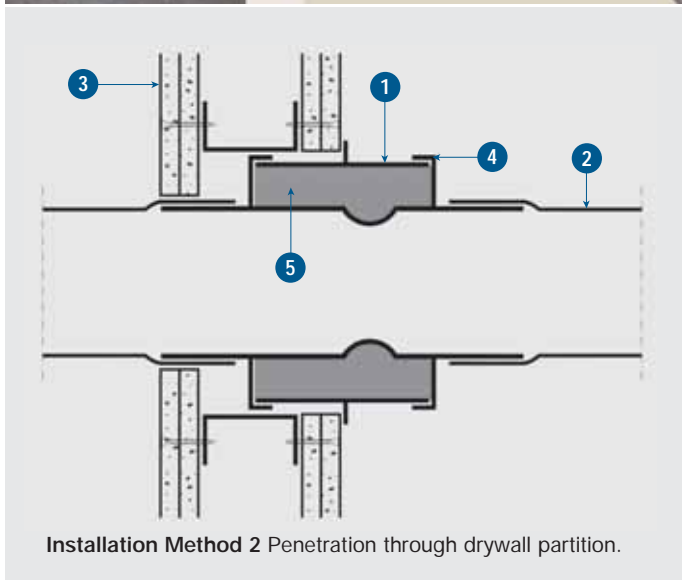
Packaging

PROMASTOP® AirChoke® fire dampers are packaged individually in boxes





Installation Method 1 Tight to floor slab.



Installation Method 2 Penetration through drywall partition.

For all applications fixed to 3 layer gypsum board systems (90 minutes and 120 minutes) and for 90 minutes framed wall systems, the damper is fixed to the wall with 10mm x 40mm gypsum laminating screws (with washers). For all brick, masonry or concrete wall applications use minimum 6mm x 25mm steel masonry anchors (with washers).

For 120 minutes framed board system wall applications, fix the damper back to the stud work with gypsum screws (with washers). For lightweight block systems fix damper to the blocks with approved fixings for the blocks used. For 120 minutes framed, boarded partitions and shafts, the opening through which the duct passes must be trimmed around, with the wall framing, tight to the damper (within 10mm of damper spigot). This framing is not required for 90min wall, framed systems.

If the damper has been secured to the concrete floor slab (with minimum 6mm x 25mm steel masonry anchors), only the two bottom screws are required through the damper flange plate.

The annular gap between the duct and a solid masonry or concrete wall must be no more than 10mm. Attach the duct to each end of the damper "sleeve" and secure in position.

Tested Applications

PROMASTOP® AirChoke® fire damper complies with the following Australian Standards and as such complies with the requirements of the BCA.

AS 1530: Part 4: 1997 FRL -/120/120.

**AS 1682: Part 1 Fire Damper including
BS 1042: Part 1 Air Leakage test**

**AS 1668: Part 1 Fire & Smoke Control
in multi-compartment buildings**

NOTE: Tests are available detailing acoustic pressure and aging performance. Please consult Promat. At the time of issue, tests and approvals are available only for dampers up to 160mm. Damper is to be fixed to the risk side of the wall or shaft.

TECHNICAL DATA

2 hours fire rating, integrity and insulation in accordance with the criteria of AS 1530: Part 4: 1997, AS 1682: Part 1, AS 1668: Part 1 and BS 1042: Part 1.

- | | | | |
|---|---------------------------------|---|----------|
| 1 | PROMASTOP® AirChoke® | 3 | Wall |
| 2 | Plastic, metal or flexible duct | 4 | Cover |
| | | 5 | Grafitex |

Promat provides a wide range of systems for compartmentation, fire rated air and cable ducts, structural steel protection, fire stopping, glazing systems and partitions. For assistance with any ProActive Fire Protection problems, contact your local distributor.

Important Notes

Promat product data sheets and health and safety data sheets are regularly reviewed and are available on request. The successful use of this product is dependent on a number of factors. As the information contained in this literature can only be of a general nature, it is advisable to consult our technical department if there is any doubt about the correct use of this product in a particular application. Our technical representatives and advisors are available to provide further technical and commercial assistance.

PROMASTOP® AirChoke® is manufactured under a quality management system certified in accordance with ISO 9001: 2000 Certification. The production unit has passed the site audit of ISO 14001 and all manufacturing processes are in accordance with the environmental standards of ISO 14001.

ASIA PACIFIC HEADQUARTERS

Promat International (Asia Pacific) Ltd.
Tel: +60 (3) 2095 5111
Fax: +60 (3) 2095 6111
Email: info@promat-ap.com

AUSTRALIA

Promat Australia Pty. Ltd.
Tel: +61 1800 30 20 20
Fax: +61 (8) 8352 1014
Email: mail@promat.com.au

New South Wales Office

Promat Australia Pty. Ltd.
Tel: +61 1800 30 20 20
Fax: +61 (2) 9630 0258
Email: mail@promat.com.au

Victoria Office

Promat Australia Pty. Ltd.
Tel: +61 1800 30 20 20
Fax: +61 (3) 9645 3844
Email: mail@promat.com.au

Western Australia Office

Promat Australia Pty. Ltd.
Tel: +61 1800 30 20 20
Fax: +61 1800 33 45 98
Email: mail@promat.com.au

CHINA

Promat China Ltd.
Tel: +86 (20) 8136 1167
Fax: +86 (20) 8136 1372
Email: info@promat.com.cn

Beijing Office

**Promat North China
(Division of Promat China Ltd.)**
Tel: +86 (10) 8589 1254
Fax: +86 (10) 8589 2904
Email: info@promat.com.cn

HONG KONG

Promat International (Asia Pacific) Ltd.
Tel: +852 2836 3692
Fax: +852 2834 4313
Email: apromath@promat.com.hk

INDIA

**Promat International (Asia Pacific) Ltd.
(India Representative Office)**
Tel: +91 (11) 2433 1594
Fax: +91 (11) 2433 1595
Email: info-india@promat-asia.com

MALAYSIA

Promat (Malaysia) Sdn. Bhd.
Tel: +60 (3) 2095 8555
Fax: +60 (3) 2095 2111
Email: info@promat.com.my

SINGAPORE

Promat Building System Pte. Ltd.
Tel: +65 6776 7635
Fax: +65 6776 7624
Email: info@promat.com.sg

VIETNAM

**Promat International (Asia Pacific) Ltd.
(Vietnam Representative Office)**
Tel: +84 (8) 931 5964
Fax: +84 (8) 931 5964
Email: phuong@promat-asia.com

OFFICIAL WEBSITE

www.promat-ap.com

Your local Promat supplier

