



2 Hour Fire Rated Hatch - Promapanel

FRL 120 / 120 / 120

Description

The Fyreguard Promapanel is a screw fixed access panel with or without a laminated MDF face designed to meet the requirements of the BCA with FRL's of 120/120/120 and 60/60/60.

Users

For installation in walls, shafts and ceilings where full integrity and insulation criteria are required under fire conditions. Promapanel provides maintenance access to voids and services in fire rated construction.

Sizes

PP1200	1200x600mm nom.	PP500	500x500mm nom.
PP1000	1000x600mm nom.	PP450	450x450mm nom.
PP600	600x600mm nom.	PP300	300x300mm nom.

Other sizes to order. Maximum size 1500x1000mm in masonry walls, 1500x600mm in fire rated plasterboard walls and 1200x600mm in fire rated ceilings (see details on reverse side).

Promapanel must fit between studs in lightweight walls. Do Not cut studs.

Packaging

Prescrewed welded frame with all trimmings and hardware.

Installation

Panels can be installed in a variety of wall and ceiling systems. (Note, the clear opening size is reduced by 40mm all round to allow for the fixing angles). See instructions on back of this data sheet.

Fire Test Data

The Promapanel Fire Rated Access Panel meets the requirements of Australian Standard AS1530.4 and the Building Code of Australia attaining FRL's of 120/120/120 and 60/60/60.

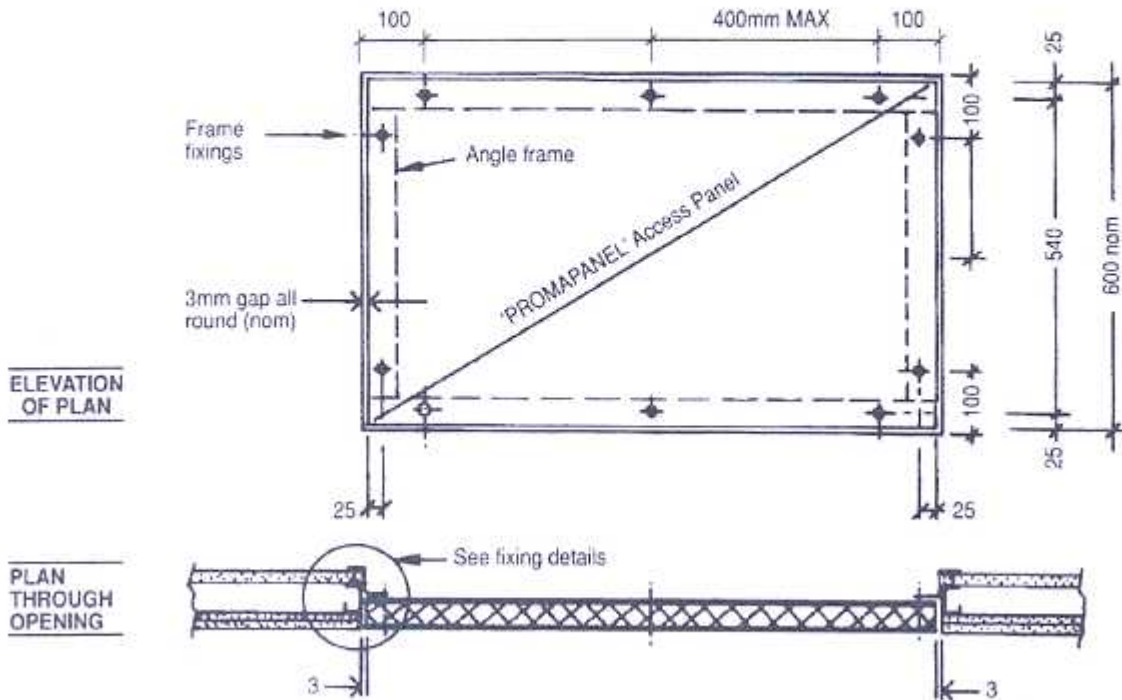
More Data

See back of sheet for further installation details. If your particular requirements is not covered here contact your local Fyreguard Qld Office.

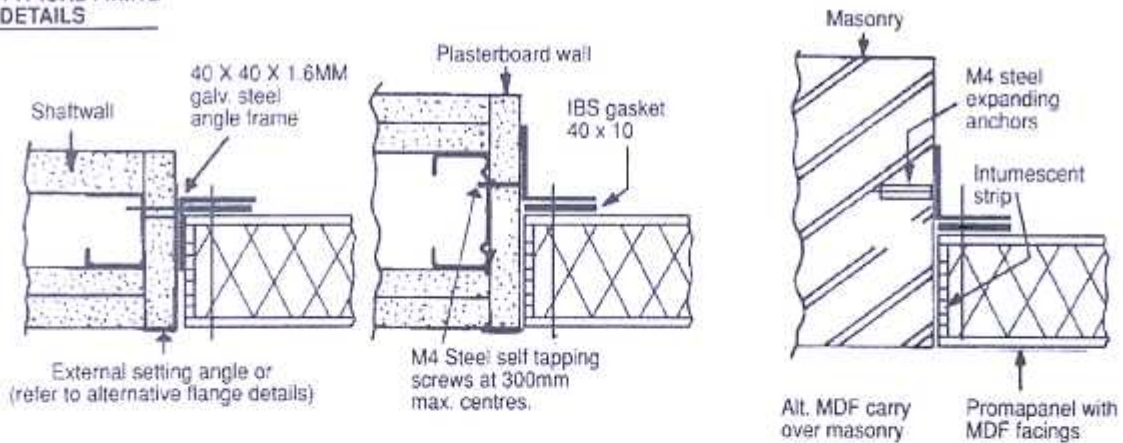
Material Safety Data Sheet available on request.

Fyreguard Qld reserve the right to change specifications without notice.

For acoustic modifications and details refer to Fyreguard Qld.



TYPICAL FIXING DETAILS



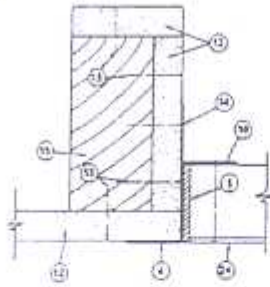
ALTERNATIVE FLANGE DETAILS



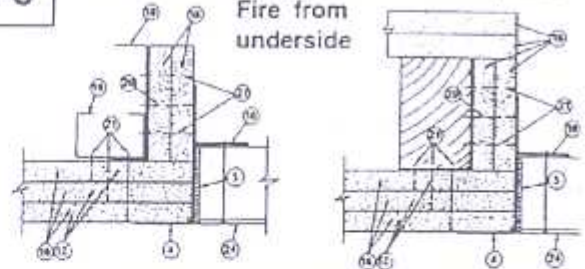
F1

1/2 Hour ceiling system - fire from underside - Screw fix panel.

Boral system CS17
 CSR system F150
 Pioneer system PS 510

**F6**

1-1/2 Hour ceiling system - Screw fix panel
 Fire from underside

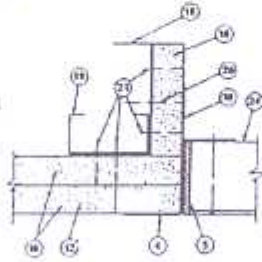


CSR system F 220 & F 221, Boral system CS 10
 Pioneer system PS 540*

F2

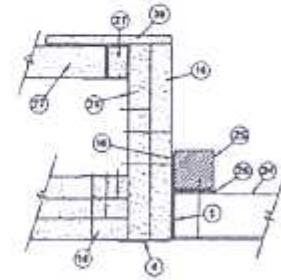
1 Hour ceiling system - fire from underside - Screw fix panel.

Boral system CS15
 CSR system F154 to F158
 Pioneer system
 PS 520, PS 530*

**F7**

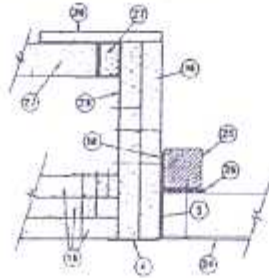
1-1/2 Hour ceiling system - fire from either direction - Screw fix panel

Boral system CS 9

**F3**

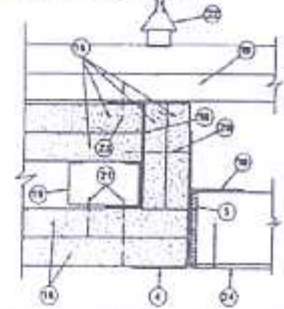
1 Hour ceiling system - fire from either direction - Screw fix panel.

Boral system CS16

**F8**

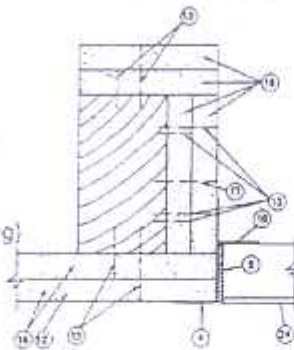
2 Hour ceiling system - fire from underside - Screw fix panel only

Boral system CS6
 CSR system F222 & F223

**F4**

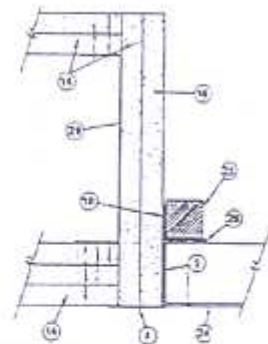
1 Hour ceiling system - fire from underside - Screw fix or hinged panel.

CSR system F151 to F153
 Boral system CS 15 (alt. fixing)
 Pioneer system PS 520,
 PS 530* (alt fixing),
 PS 560*, PS 570

**F9**

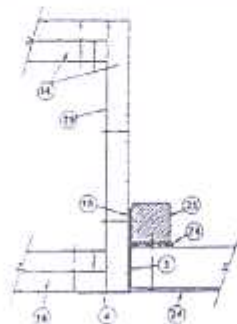
2 Hour ceiling system - fire from either direction - Screw fix panel

Boral CS 5

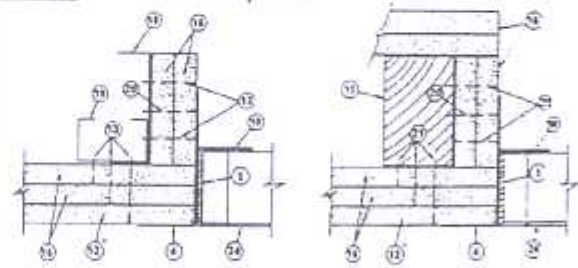
**F5**

1 Hour ceiling system - fire from either direction - Screw fix panel.

Boral system CS11

**F10**

2 Hour ceiling system - fire from underside - Screw fix panel



Pioneer system PS 550 & PS 580